

# iReady (K-8 Math Tier 2)

## Why i-Ready?

Diverse student groups—from those who need the highest levels of intervention to those who need very little intervention beyond regular classroom instruction—experience success with i-Ready because it is truly adaptive to learners at all levels of development and because the structure of the program supports different types of learners.

**Click on the links below to go to that section of this text!**

[i-Ready for Students](#)

[i-Ready for Parents](#)

[i-Ready for Teachers](#)



# i-Ready for Students!

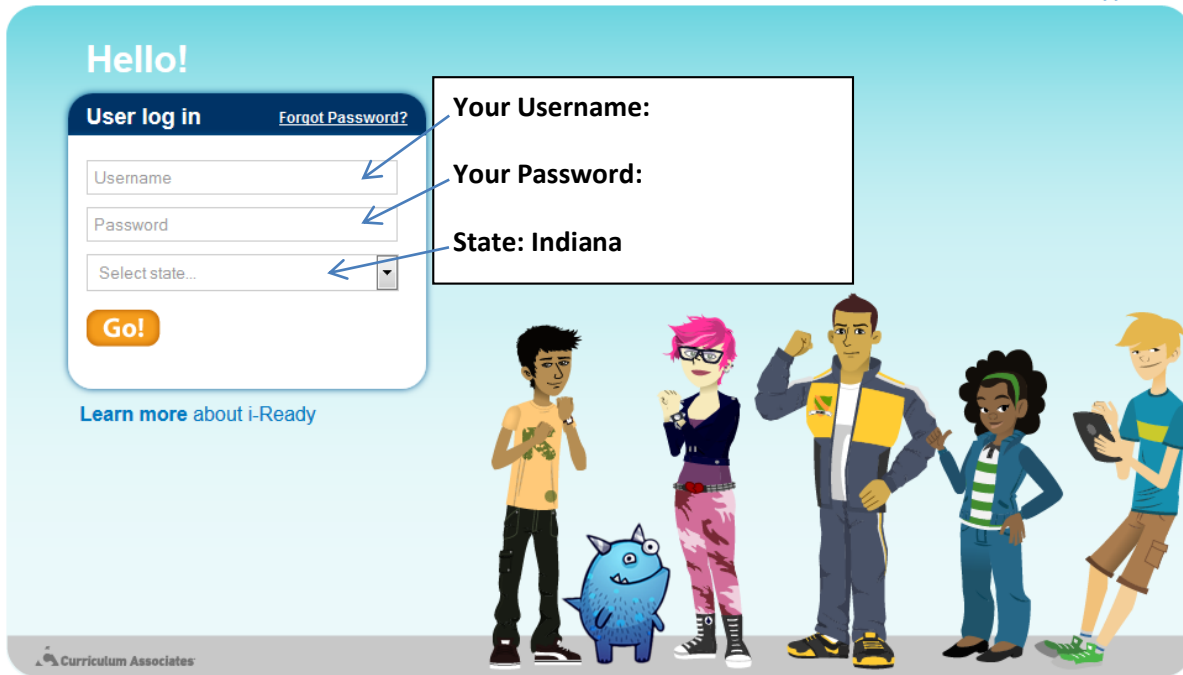
Go the website below:

<https://cainc.i-ready.com/>

How to Login?



Support



Indiana		Username	Password
	Admin	Admin-3	
	Elementary Teacher	Teacher	
	Middle School Teacher	Teacher	
	Student Instruction	Student	
	Student Diagnostic	Student	
	Student Instruction	Student	
	Student Diagnostic	Student	
	Student Instruction	Student	
	Student Diagnostic	Student-351-143-8794@grade7	password-351-143-8794

When logging in use the whole Username and Password!

For Example- Username: Student-351-143-8793@grade1 Password: password-351-143-8793

### **Student Instruction:**

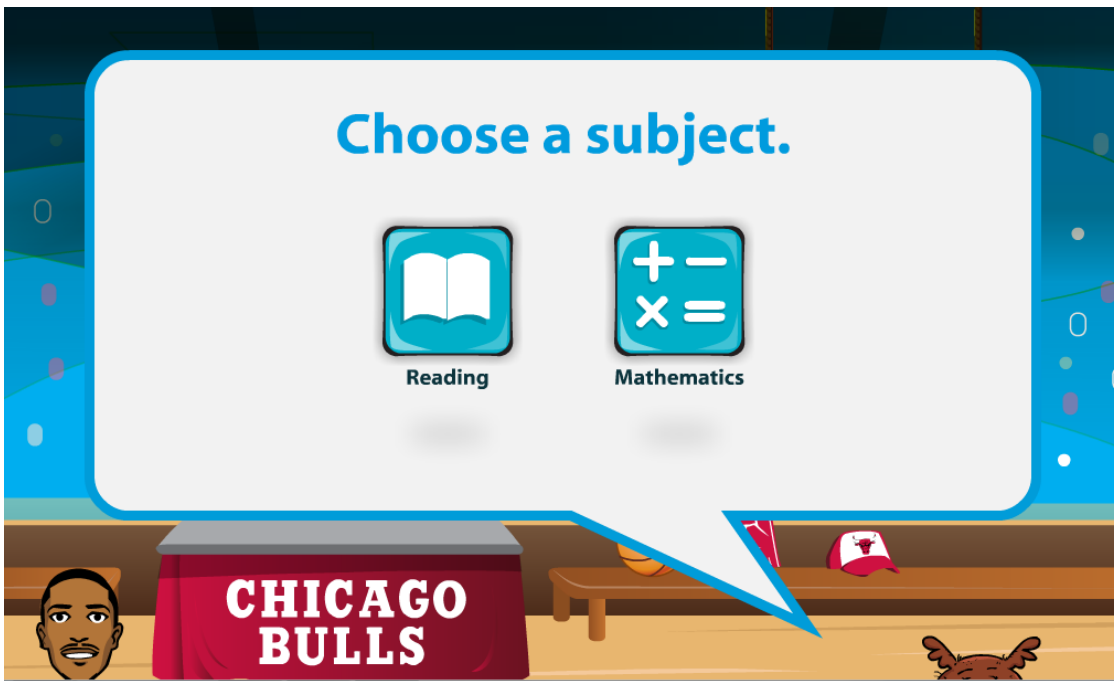
Based on the results of the i-Ready Diagnostic, students are automatically placed into student instruction customized to their placement level. These online lessons provide a consistent best-practice lesson structure and build conceptual understanding, in addition to being engaging and fun for learners of all levels.

### **Math Areas Addressed:**

1. Number and Operations
2. Algebra and Algebraic Thinking
3. Measurement and Data
4. Geometry

### **After Logging In**

Students will choose the subject that they are signed up to work on.



**Click on Math!**

My Start- Will tell you where to start each day you login.

My Progress- Will show you the progress you have made in i-Ready.

If you accidentally click the wrong button after logging in, you can always switch from reading to math and vice versa.

Your student will start with the red button Start Lessons.

My Stuff- Is the place where your coins are added up after each lesson you complete. With your coins earned you can buy games, study buddies, and new background themes.

Blue Button is for extra lessons after you complete the lessons in the red.



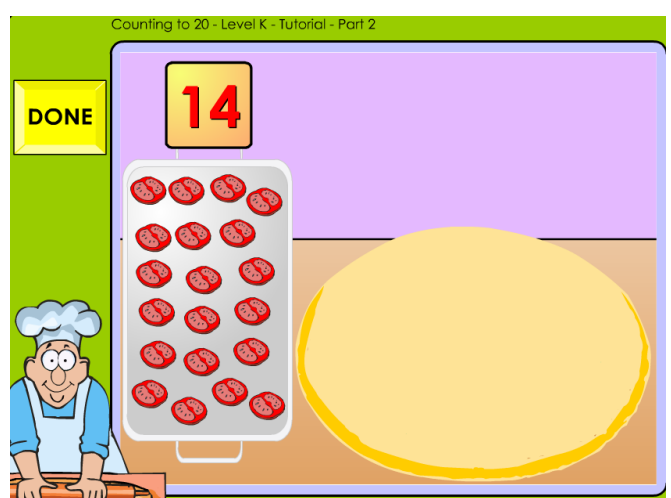
**Red Button:**

**Counting to 20**  
Level K - Tutorial - Part 2

**Objectives:**

- Count how many objects in a given set.
- Create a set of a given size.
- Recognize the numerals from 11 to 20.

Start Lesson



The characters will read to your student and give them

instructions on what they need to do!

# IMPORTANT:



If you need to leave a lesson in the middle click on this button in the top right hand corner of the screen.

It will pick up the lesson right where you left off. This way you are not redoing lessons.

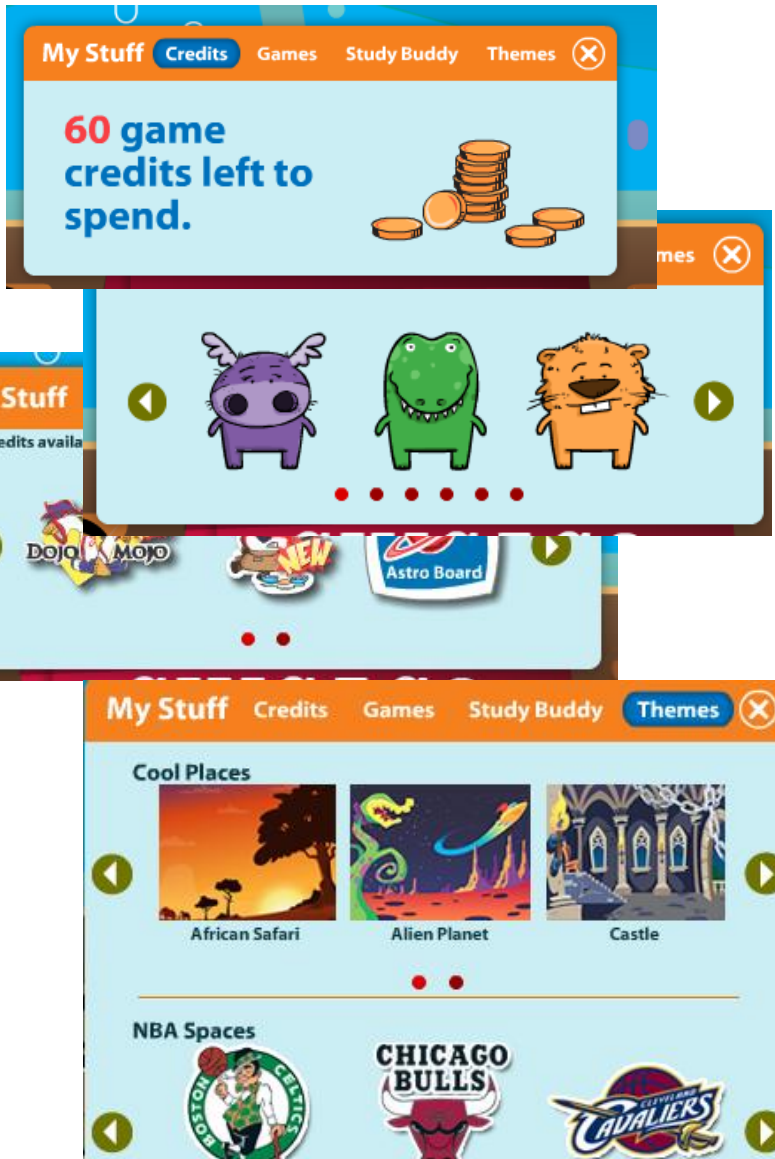
## My Progress



Subject	Status
Number and Operations	You passed 3 out of 4 lessons.
Algebra and Algebraic Thinking	You passed 0 out of 0 lessons.
Measurement and Data	You passed 0 out of 0 lessons.
Geometry	You passed 0 out of 0 lessons.

## My Stuff

You can spend your coins on games, study buddies, and background themes.

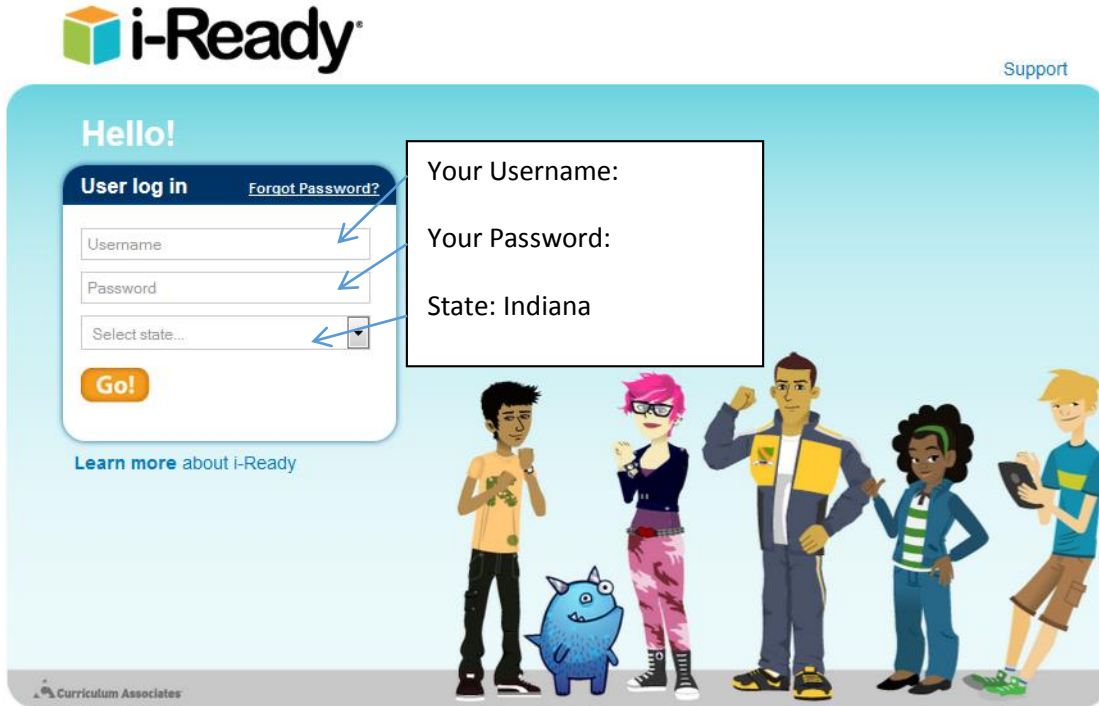


# i-Ready for Parents!

Go the website below:

<https://cainc.i-ready.com/>

How to Login?



Indiana		Username	Password
	Admin	Admin	
	Elementary Teacher	Teache	
	Middle School Teacher	Teache	
	Student Instruction	Studen	
	Student Diagnostic	Studen	
	Student Instruction	Studen	
	Student Diagnostic	Studen	
	Student Instruction	Studen	
	Student Diagnostic	Student-351-143-8793@grade7	password-351-143-8793

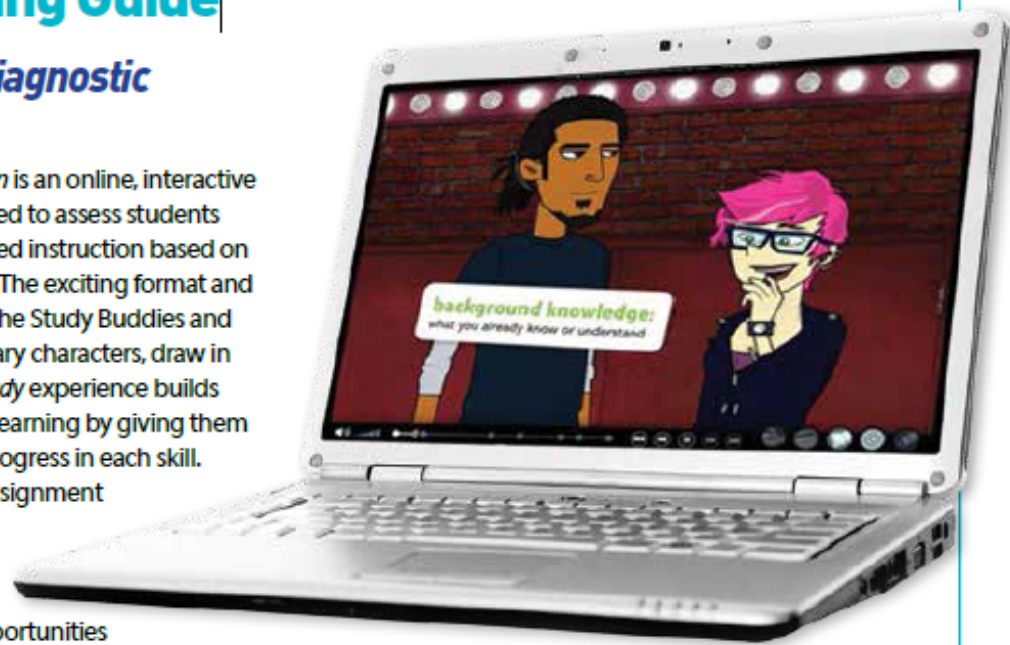
When logging in use the whole Username and Password!

For Example- Username: Student-351-143-8793@grade1 Password: password-351-143-8793

## ***i-Ready Diagnostic & Instruction:*** **Parent Training Guide**

### **What is *i-Ready Diagnostic & Instruction*?**

*i-Ready Diagnostic & Instruction* is an online, interactive learning environment designed to assess students and then provide individualized instruction based on each student's unique needs. The exciting format and engaging content, as well as the Study Buddies and other interesting, contemporary characters, draw in students right away. The *i-Ready* experience builds students' investment in their learning by giving them real-time feedback on their progress in each skill. As students complete each assignment successfully, they earn credits that they can use to play games. *i-Ready Diagnostic & Instruction* also provides opportunities to learn both at school and at home.



### **How can I help my child get the most out of *i-Ready Diagnostic & Instruction*?**

- Talk with your child about how practicing *i-Ready Diagnostic & Instruction* at home will help prepare for classwork. Also, explain that *i-Ready Diagnostic & Instruction* will show teachers where your child is doing well and which topics need some more review.
- Encourage your child to use the tools provided during lessons (reference to objectives, key terms, etc.) and to use scrap paper for math computation.
- Help your child identify and become familiar with the different parts of the student home page (My Assignments, My Stuff, My Progress).
- To help your child get started, see *How Does My Child Navigate i-Ready Diagnostic & Instruction?* (p. 2).
- Have your child use the Student Instructions for Completing Online Lessons (p. 3).
- Encourage your child to take each lesson and question seriously. Emphasize "think before clicking," because just clicking through will not give an accurate report of what your child knows and is able to do.
- Discuss your child's results by looking together at the "My Progress" box.
- Contact your child's teacher about how often your child should practice at home, or with any additional questions about *i-Ready Diagnostic & Instruction*.

For more information  
on *i-Ready*, go to  
[www.i-Ready.com/Tour](http://www.i-Ready.com/Tour)





## Where can I go to see how my child is performing?

Log in with your child's Username and Password, and view your child's "My Progress" box. Click on "Detail" to see your child's progress by each skill domain and standard.

## How does my child navigate *i-Ready Diagnostic & Instruction*?

The screenshot shows the user interface for a student named Jay. At the top, there are navigation tabs for "Reading Instruction", "Switch to Mathematics", and "Logout". Below this, there are three main sections: "My Start", "My Progress", and "My Stuff".

- My Start:** Contains two buttons: "Start Lessons" (red) and "Start Extra Lessons" (blue). A callout points to "Start Lessons" with the text: "Students will be prompted to go to next lesson assigned to them."
- My Progress:** A table showing performance across various domains. A callout points to the "Details" link above the table with the text: "Clicking on Detail will show student progress on each domain and standard." Another callout points to the "Summary" link with the text: "Clicking on Summary shows the number of lessons passed and game credits earned."
- My Stuff:** Shows "30 game credits left to spend" with an illustration of coins. A callout points to this section with the text: "Students can choose background themes, Study Buddies, and play games with credits earned!"

The interface also features a "Cause and Effect" section and a "My Stuff" sub-section with tabs for "Credits", "Games", "Study Buddy", and "Themes". The background is a colorful underwater scene with a cartoon moose character.

## How does *i-Ready Diagnostic & Instruction* work with what my child is learning in the classroom?

*i-Ready Diagnostic & Instruction* is designed to complement what is being taught in the classroom. The lessons are assigned based on how your child performed in the Diagnostic test, which he/she must complete before starting work on the lessons. The lessons are presented in three parts: tutorial, guided practice, and graded activity. Your child will get relevant instruction with supportive feedback as he/she progresses through the lessons.

## Student Instructions for Completing Online Lessons

1. Open an internet browser (Internet Explorer, Firefox, or Safari).
2. Go to: **login.i-ready.com**
3. Enter your **Username** and **Password**. If you do not have your Username and Password, ask your teacher.
4. Select your state and click **Go!**



5. Select either **Reading** or **Math**. Your teacher will tell you which one to start with.



6. Keep track of your progress using the tabs in the "My Progress" box.

7. Click on **Start Lessons** to begin next assigned lesson.

8. Earn credits to play games with every lesson you complete! Keep track of credits, select games, change Study Buddies, and change themes in the "My Stuff" box.



❏ If there is 1 gallon of water in the fishbowl, about how many more gallons of water do I need to fill up the fish tank?



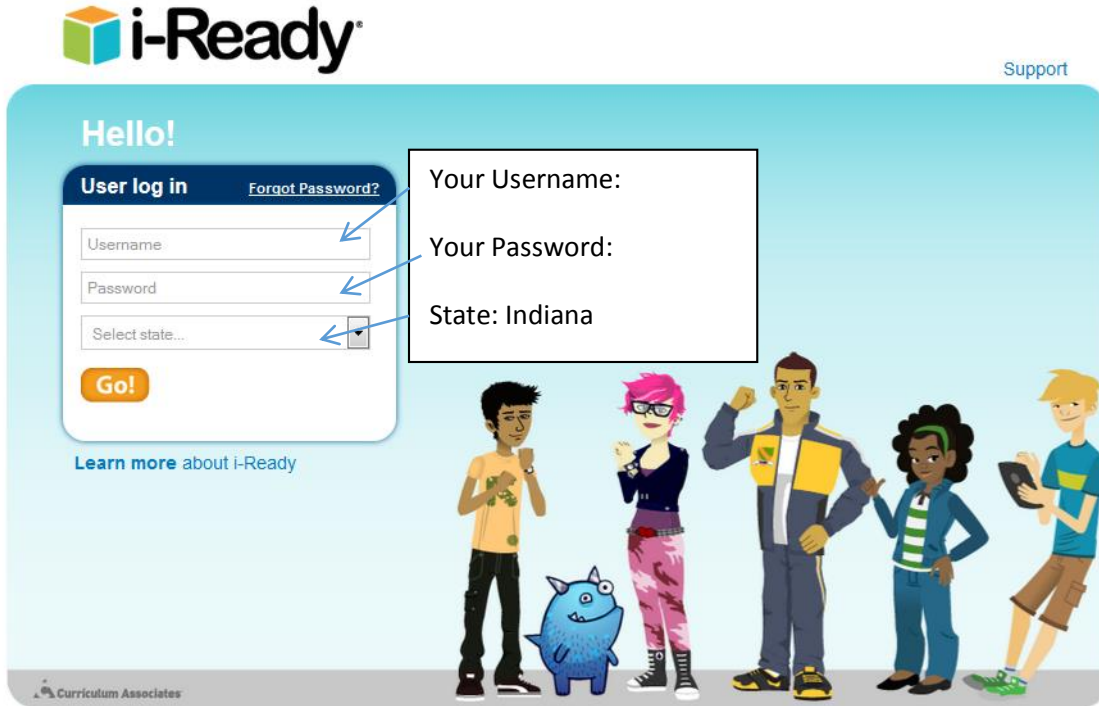
9. Have fun and do your best!

# i-Ready for Teachers!

Go the website below:

<https://cainc.i-ready.com/>

How to Login?



Indiana		Username	Password
	Admin	Admin-3	pa
	Elementary Teacher	Teacher-	pa
	Middle School Teacher	Teacher-	pa
	Student Instruction	Student-	pa
	Student Diagnostic	Student-	pa
	Student Instruction	Student-	pa
	Student Diagnostic	Student-	pa
	Student Instruction	Student-	pa
	Student Diagnostic	Student-	pa

When logging in use the whole Username and Password!

For Example- Username: Student-351-143-8793@grade1 Password: password-351-143-8793

## Teacher Lead Instruction

Instantly available reports from i-Ready Diagnostic, detail each student's abilities and areas of need. The information in these reports provide teachers with an action plan for individual and group instruction as well as the tools to deliver that instruction in any style learning environment.

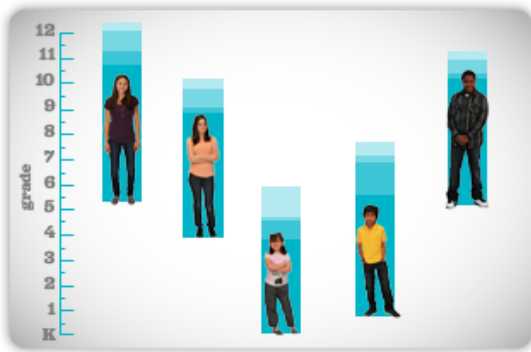
### Teaching Areas Addressed:

1. Phonological Awareness
2. Phonics
3. High-Frequency Words
4. Vocabulary
5. Comprehension: Literature
6. Comprehension: Informational text

### What Assessment is used in i-Ready?

#### **i-Ready Diagnostic:**

The Assessment is called...



#### **2. Measures growth across a student's career.**

Because the Diagnostic adapts across grades K–12, i-Ready provides a valid and reliable growth measure from year to year. Use i-Ready across the district to track yearly student progress and to optimize administrative decision making for long-term performance improvements.

...measure of student growth that enables district leaders and instructional teams to take steps for instruction.

You will see tabs at the top that will take you to your class roster, change your settings, look at what your students have completed in the assignments tab, look at reports, and use lesson plans to help you with small group instruction.

### 3. Supports data-driven differentiated instruction.

Based on the Diagnostic results, i-Ready automatically provides individualized online and teacher-led instruction targeted to each student's unique needs. In addition, easy-to-read reports provide teachers with a detailed action plan for individual and group instruction and the tools to deliver that instruction in any style learning environment.

#### After Logging In

You will see the homepage!

The screenshot shows the i-Ready Diagnostic & Instruction homepage. At the top, there is a navigation bar with buttons for Home, Roster, Settings, Assignments, Reports, and Resources. Below the navigation bar is a greeting: "Hello, Teacher-351-143-8846 Try it! Welcome to i-Ready Diagnostic & Instruction". The main content area is divided into three columns: "Most Recent Diagnostic", "Instructional Progress", and "Performance and Growth". Each column contains a table of data. To the right of these columns is a "What's the Buzz?" section with a news item about "New! Close Reading Lessons for Grades 3 to 5" and a link to "Build Groups That Work For Your Classroom". Below this is a "Diagnostic Test Windows" section with a table showing a window for "08/01/12 - 07/31/13".

Here you will see quick links to see what your students have accomplished and what progress they are making.

The top box gives you news from i-Ready about what has been updated and offered to you!

The second box Diagnostic Test window gives a time frame for the students to complete the Diagnostic Test before working on actual lessons in i-Ready.

## Roster

This is where you can add your personal class, your student list, and if need be form instructional student groups.

Showing Harrington Elementary School. Showing: 18 of 18

Find... Find... Find...

	Class Name	Product	Grade	Teacher(s)
EDIT	Class Grade 1	i-Ready Diagnostic & Instruction Mathematic	1	Try-It, Teacher259; Try-It, Teacher357; Try-It, Teacher-336-143-9668;
EDIT	Class Grade 1	i-Ready Diagnostic & Instruction Reading	1	Try-It, Teacher368; Try-It, Teacher384; Try-It, Teacher335; Try-It, Teac
EDIT	Class Grade 2	i-Ready Diagnostic & Instruction Mathematic	2	Try-It, Teacher331; Try-It, Teacher349; Mejia, Leo; Try-It, Teacher311;
EDIT	Class Grade 2	i-Ready Diagnostic & Instruction Reading	2	Try-It, Teacher348; Try-It, Teacher306; Try-It, Teacher353; Try-It, Teac
EDIT	Class Grade 3	i-Ready Diagnostic & Instruction Mathematic	3	Try-It, Teacher271; Try-It, Teacher345; Try-It, Teacher310; Try-It, Teac
EDIT	Class Grade 3	i-Ready Diagnostic & Instruction Reading	3	Try-It, Teacher284; Try-It, Teacher352; Try-It, Teacher290; Try-It, Teac
EDIT	Class Grade 4	i-Ready Diagnostic & Instruction Mathematic	4	Try-It, Teacher271; Try-It, Teacher328; Try-It, Teacher253; Try-It, Teac
EDIT	Class Grade 4	i-Ready Diagnostic & Instruction Reading	4	Try-It, Teacher263; Try-It, Teacher319; Try-It, Teacher298; Try-It, Teac
EDIT	Class Grade 5	i-Ready Diagnostic & Instruction Mathematic	5	Try-It, Teacher274; Try-It, Teacher380; Try-It, Teacher257; Try-It, Teac
EDIT	Class Grade 5	i-Ready Diagnostic & Instruction Reading	5	Try-It, Teacher345; Try-It, Teacher317; Try-It, Teacher306; Try-It, Teac
EDIT	Class Grade K	i-Ready Diagnostic & Instruction Mathematic	K	Try-It, Teacher252; Try-It, Teacher369; Try-It, Teacher274; Try-It, Teac
EDIT	Class Grade K	i-Ready Diagnostic & Instruction Reading	K	Try-It, Teacher-336-143-9668; Try-It, Teacher292; Try-It, Teacher385;
EDIT	Elementary After School	i-Ready Diagnostic & Instruction Mathematic	4	Try-It, Teacher364; Try-It, Teacher246; Try-It, Teacher369; Try-It, Teac
EDIT	Elementary After School	i-Ready Diagnostic & Instruction Reading	4	Try-It, Teacher252; Try-It, Teacher352; Try-It, Teacher345; Try-It, Teac
EDIT	Elementary Intervention	i-Ready Diagnostic & Instruction Mathematic	5	Try-It, Teacher298; Try-It, Teacher-37-155-7746; Try-It, Teacher329; T
EDIT	Elementary Intervention	i-Ready Diagnostic & Instruction Reading	5	Try-It, Teacher277; Try-It, Teacher288; Try-It, Teacher252; Try-It, Teac

[Add New Class...](#) [Refresh](#) ?

## Settings

The teacher can take away student privileges and give assessment restrictions.

[Class Settings](#) | [Assessment Restrictions](#) | [HS Math](#)

Choose your Class or Instructional Group

Class Grade 1 (Mathematics) ▼

Set My Stuff default for the whole Class or Instructional Group

On: Students in this class may select games, themes, and study buddies when not taking a test or lesson

Off: My Stuff Module will not appear on student homepage for students in this class

[Cancel](#) [Save](#)

Set My Stuff override for individual Students

Set My Stuff Module on student homepage for selected students in class

Your district or school administrators may choose to restrict the hours during which students take assessments within i-Ready. This is usually done in order to ensure that students are taking assessments in a monitored environment during the school day. Students can only take assessments according to the schedule below, which has been determined by your school or district administrator. If a student logs in outside of the selected days/times, they can still complete any online lessons that they have been assigned.

Harrington Elementary School

**Restrictions by Time of Day**

No restrictions based on time of day.

**Restrictions by Day of Week**


No restrictions based on day of the week.

**Assignments**

**You can manage your classes, see where students are at individually in their assignments, see what extra lessons have been done, see what lessons have been completed, and see what tests/assessments the students have taken.**

**Class Management**

Class  Instructional Group

Select Class 

Class Management allows you to make changes to an entire class or a specific group of students. First, select the change you would like to make. Second, decide whether this change applies to an entire class or a specific group of students. Then confirm the change.

## Reports

Teachers can see their class reports and student reports

Class Reports | Student Reports

School: Harrington Elementary School

### 1. Choose a Report

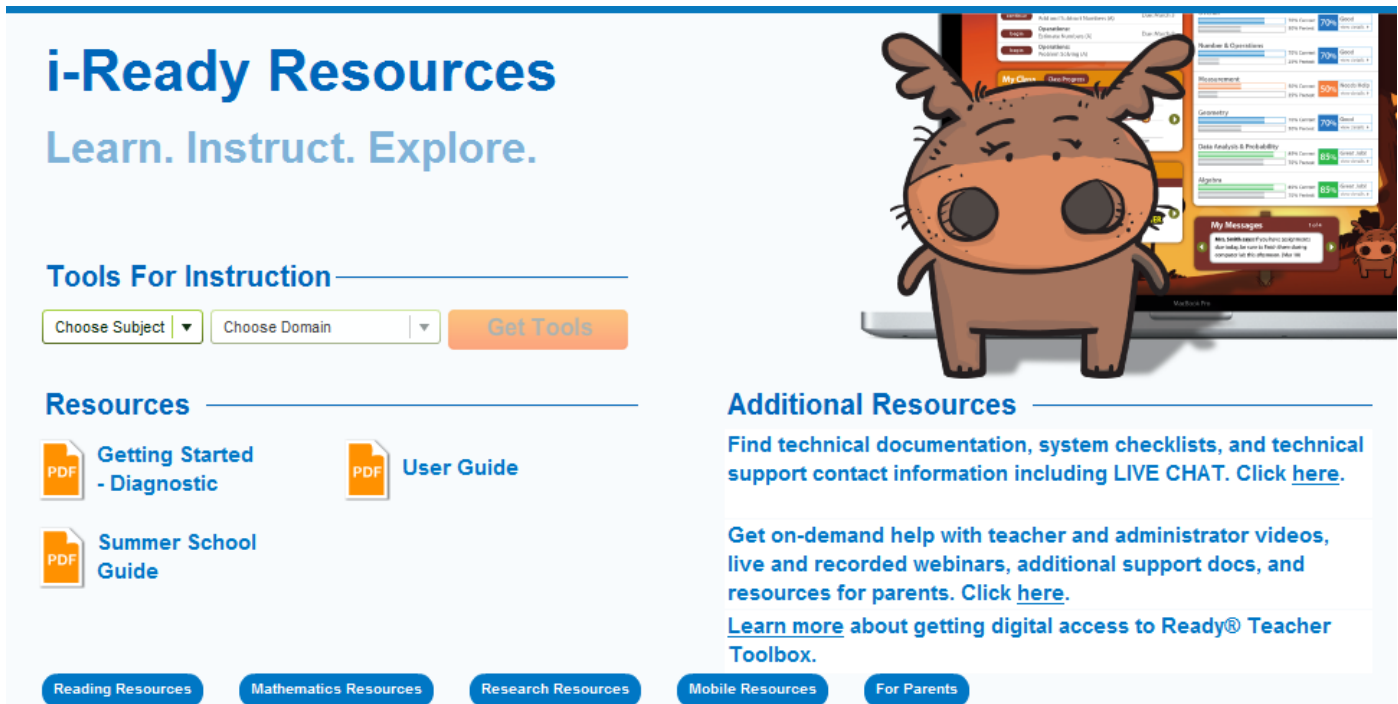
Class Profile  
Class Norms  
Progress Monitoring  
Instructional Grouping Profile  
Class Response to Instruction

### Welcome to Reports

Select a report from the list to the left, or place the cursor over a report name to get a description of each report.

## Resources

Teachers can use these resources to help with lesson planning and instruction



## i-Ready Resources

Learn. Instruct. Explore.

### Tools For Instruction

Choose Subject | Choose Domain | [Get Tools](#)

### Resources

- [Getting Started - Diagnostic](#)
- [User Guide](#)
- [Summer School Guide](#)

### Additional Resources

Find technical documentation, system checklists, and technical support contact information including LIVE CHAT. [Click here.](#)

Get on-demand help with teacher and administrator videos, live and recorded webinars, additional support docs, and resources for parents. [Click here.](#)

[Learn more](#) about getting digital access to Ready® Teacher Toolbox.

[Reading Resources](#) | [Mathematics Resources](#) | [Research Resources](#) | [Mobile Resources](#) | [For Parents](#)